



 University of
Kentucky

You've Made the Right Choice!

Living on Campus

Who We Are



Campus
Housing



Dining



Residence
Life



Benefits of Living on Campus

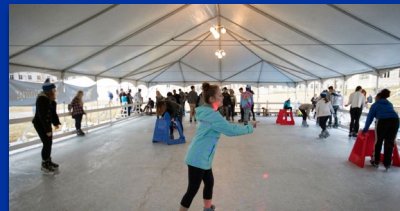


Benefits of Living on Campus

- Living Learning Program
- Academic support
- Professionally trained live-in staff
- Resident Advisors on every floor
- State-of-the-art entry into halls tied to your WildCard ID and other enhanced security features
- Great food options just outside your door
- Lifelong friendships
- Always something going on!



UK Campus Housing Events





UK Campus Housing Provides Support For Academic Tutoring in All Neighborhoods



The Study North- Jewell

The Study Central- Donovan

The Study South- WG3



Fall Move-In



Assisted Move-In Dates

Saturday, August 17

9:00 a.m. - 4:00 p.m.

Panhellenic Sorority Recruitment
Wildcat Marching Band
International Students
BCTC

Monday, August 19

9:00 a.m. - 4:00 p.m.

Living Learning Program

Wednesday, August 21

9:00 a.m. - 4:00 p.m.

Freshmen and Returning
Students

Move-In information will be provided the week of August 1.

An early Move-In fee of \$25 per night will be charged to students moving in prior to August 19.

Move-In Appointments

- A recommended one hour “window” of time for arriving at the unloading area
- The purpose is to “spread out” the arrivals throughout the day
- There are a limited number of move-in appointments for each time slot
- Students select a move-in appointment starting June 3rd, but no later than **July 29th**

Move-In Appointments

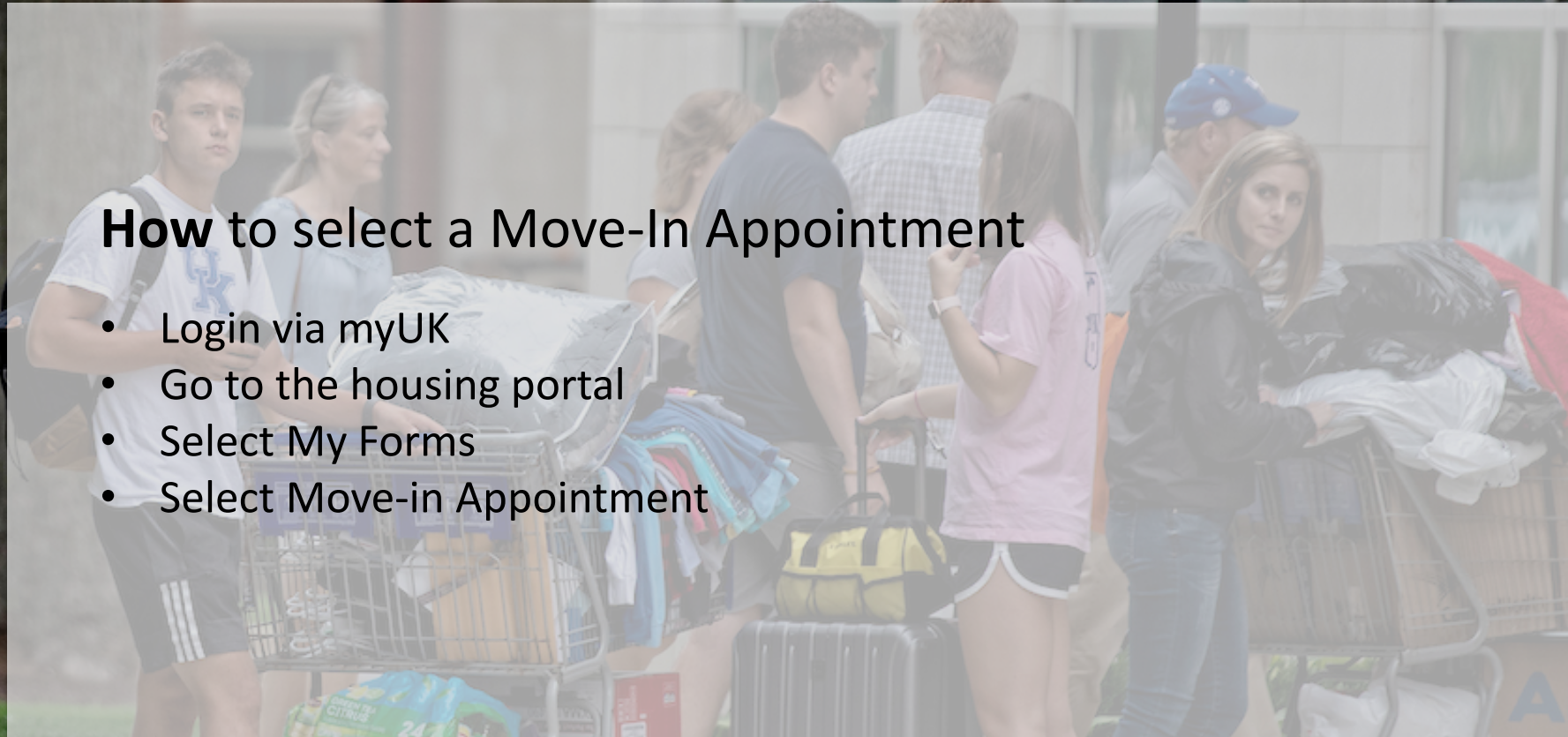
DO need to select a Move-In Appointment

- All LLP Students
- All students moving in on 8/17, 8/19 or 8/21
- Returning Students who plan to move in after 8/21, up through 8/25

Move-In Appointments

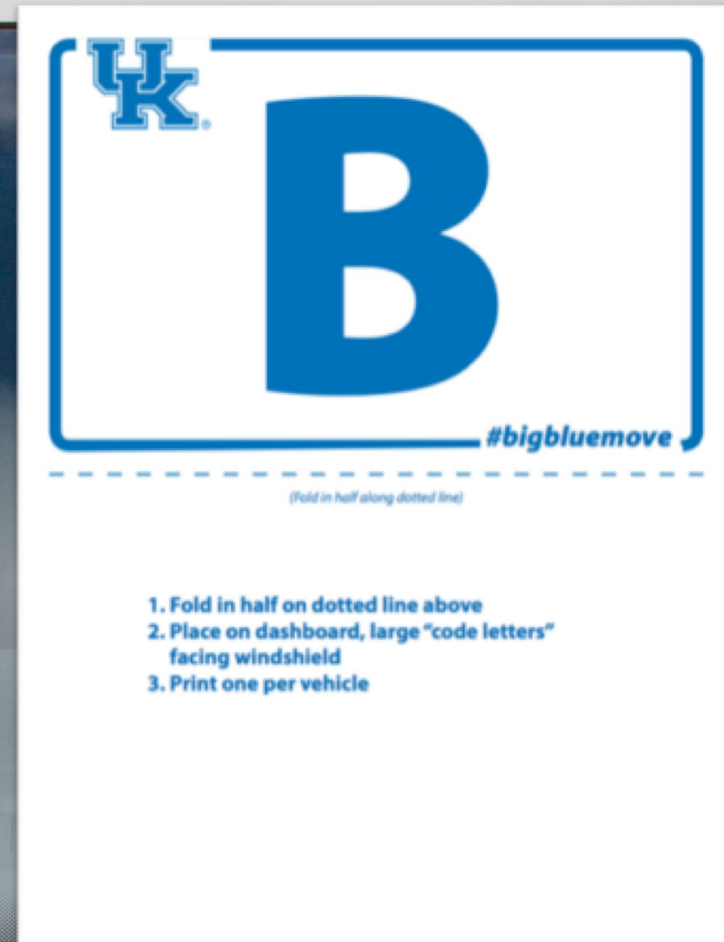
How to select a Move-In Appointment

- Login via myUK
- Go to the housing portal
- Select My Forms
- Select Move-in Appointment

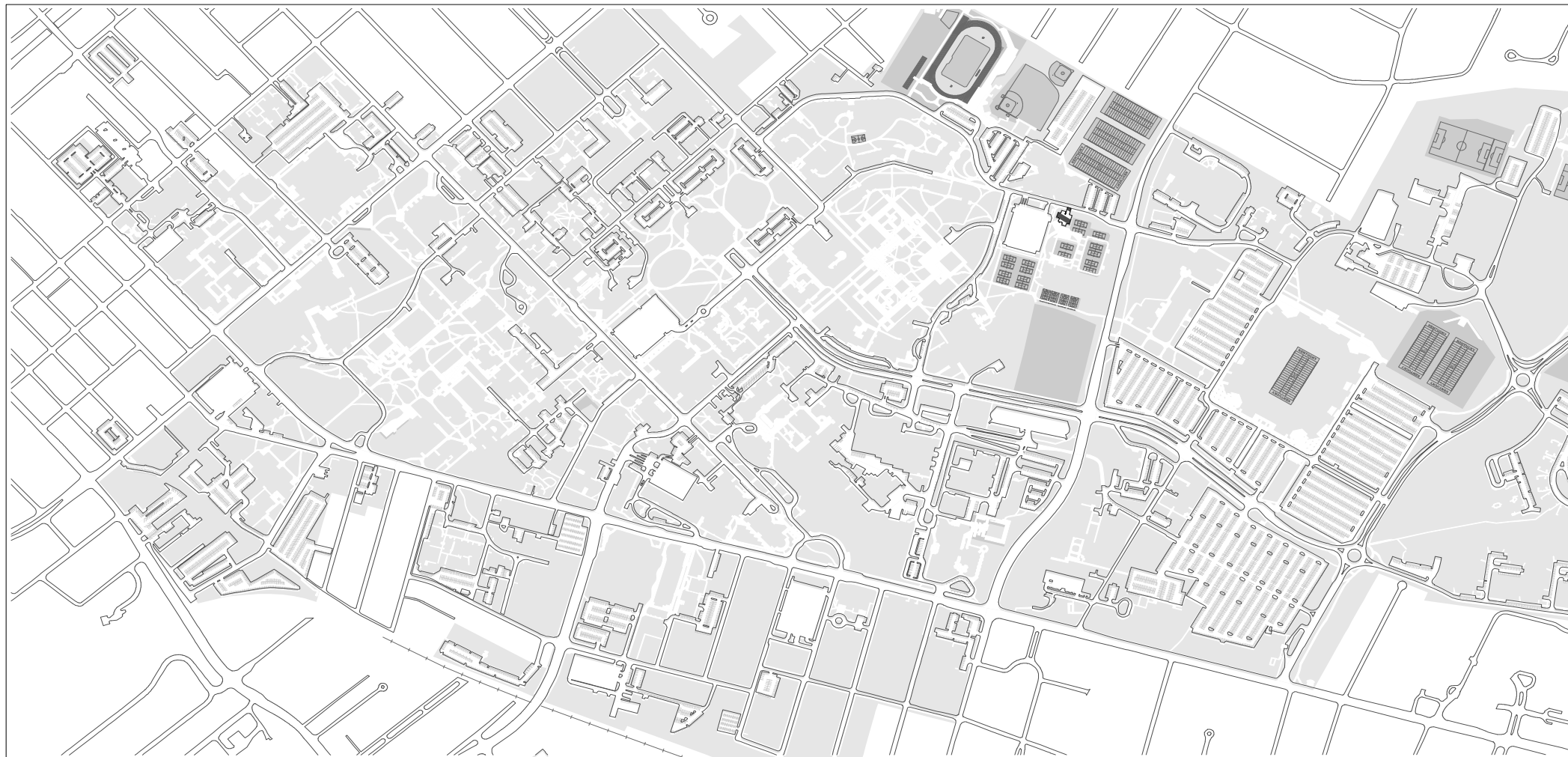


Hall Code Card

*Included in your August 1
Move-In information*



Show your hall code card to all traffic officials as you approach.



visit the mobile-friendly interactive map:
<https://maps.uky.edu/campusmap/>
For ADA accessible parking, visit:
www.uky.edu/transportation

Move-In Reminders

#PackingGoals



Step 1

- Pack in plastic containers
- Bring a dolly or push-cart

Step 2

- Turn off your GPS and Google Maps
- Place 'hall code' card on your dashboard
- Follow directional signs to your hall

Step 3

- Go to the designated unloading area
- Unload your belongings

Step 4

- Move your vehicle to parking area

Step 5

- Check-in and move-in!

What to Bring

Visit the Move-In section of the website for a complete listing of items to bring.

Linens

Twin XL

- Baldwin
- Donovan
- Ingels
- Johnson
- Smith

Full XL

- Blazer
- Boyd
- Chellgren
- Haggin
- Holmes
- Jewell
- Woodland Glen II-V

All rooms types have memory foam mattresses

Books and accessories available at the UK Bookstore

What **Not** to Bring

You don't need to bring a refrigerator, freezer or microwave!

Every residence hall room
includes a MicroFridge*
(combined fridge, freezer and microwave)

** Full-size fridge and microwave
provided in the 4-bedroom suite
and 2-bedroom deluxe suite*



What **Not** to Bring



Grills



Items Used
to loft a bed

Candles



Electric
Skillet



Hoverboards



Lamps with
Plastic Shades

Incense/
burners



Hot
Plate



Toaster
Oven



Crock
Pot



Toasters allowed

Sunlamps



Portable
Heater



Heating elements/sources
such as:

- Camping stoves
- Combustible liquids and other materials
- Deep fryers
- Immersion coils for heating water
- Ovens or stoves

Other:

- Excessive wall coverings
- Extension cords (*surge protectors are OK*)
- Lamps with plastic shades
- Power tools
- Pets (*except service animals or fish in 10 gallon tank, max. size*)

Housing and Dining Contract

Contracts are for an entire academic year (fall and spring semesters).

Fall Cancellation Schedule:

- **By May 1:** no cancellation fee
- **May 2 - June 15:** \$250
- **June 16 - July 14:** 30% of lowest housing facility rate
- **July 15 - September 1:** 50% of selected/assigned housing facility & 50% of dining plan rates plus daily prorated charges post move-in date; No Shows are included
- **After September 1:** 100% of selected housing facility & 100% of dining plan rate

Review full details of 2019-20 Housing & Dining Contract by visiting UK Housing's Contract & Cancellations page on our website.

Residence Hall Open Houses

You're Invited

Today

Noon – 2 p.m.

Open House

Boyd Hall

2-Bedroom Suite

4-Bedroom Suite

Guided Tour

Donovan Hall

4-Person Suite

UK Bookstore and Cafe

Operated by Barnes and Noble

- Located in the Gatton Student Center
- Academic superstore
- State-of-the-art, 3-story, 35,000 sq. ft.
- Full-service Starbucks Café
- Nike store
- Apple Technology shop

Buying Textbooks Online

myUK: login with your linkblue ID and password

Click on Degree Planning and Registration

Click on BUY BOOKS (upper right)

This is the best way
to get your books

Registered Classes

HISTORY

PRINT SCHEDULE

BUY BOOKS

COURSE

CREDITS

GRADE TYPE

GRADES

 [CLA 131](#)
Section 003

3.0 Credits

Normal

*** / ***

[Edit](#)

- Your schedule will generate a book list for your classes on the bookstore website
- Enter payment info to complete order.

Contact Us



Campus Housing
ukhousing@uky.edu
859-257-1866

Residence Life
residencelife@lsv.uky.edu
859-257-4784

Dining
contactukdining@lsv.uky.edu
859-281-4971